

VA-C308

Cooled thermal module/core with lens

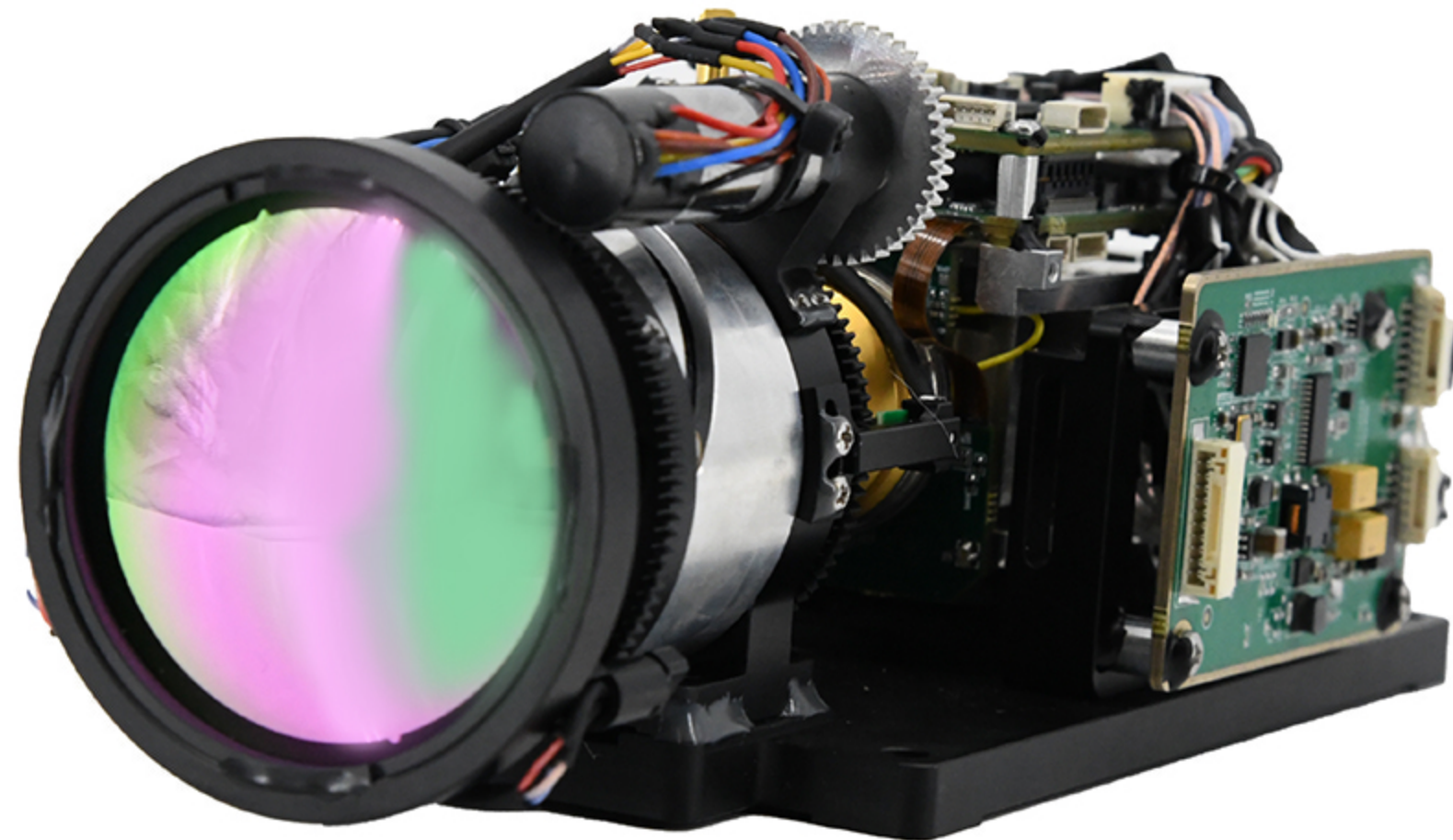


Company:Yunnan Innova Tech Co.,Ltd

Email:dante@innovaoptics.com

Whatsapp:+86-13354947507

Web:https://www.innovaoptics.com



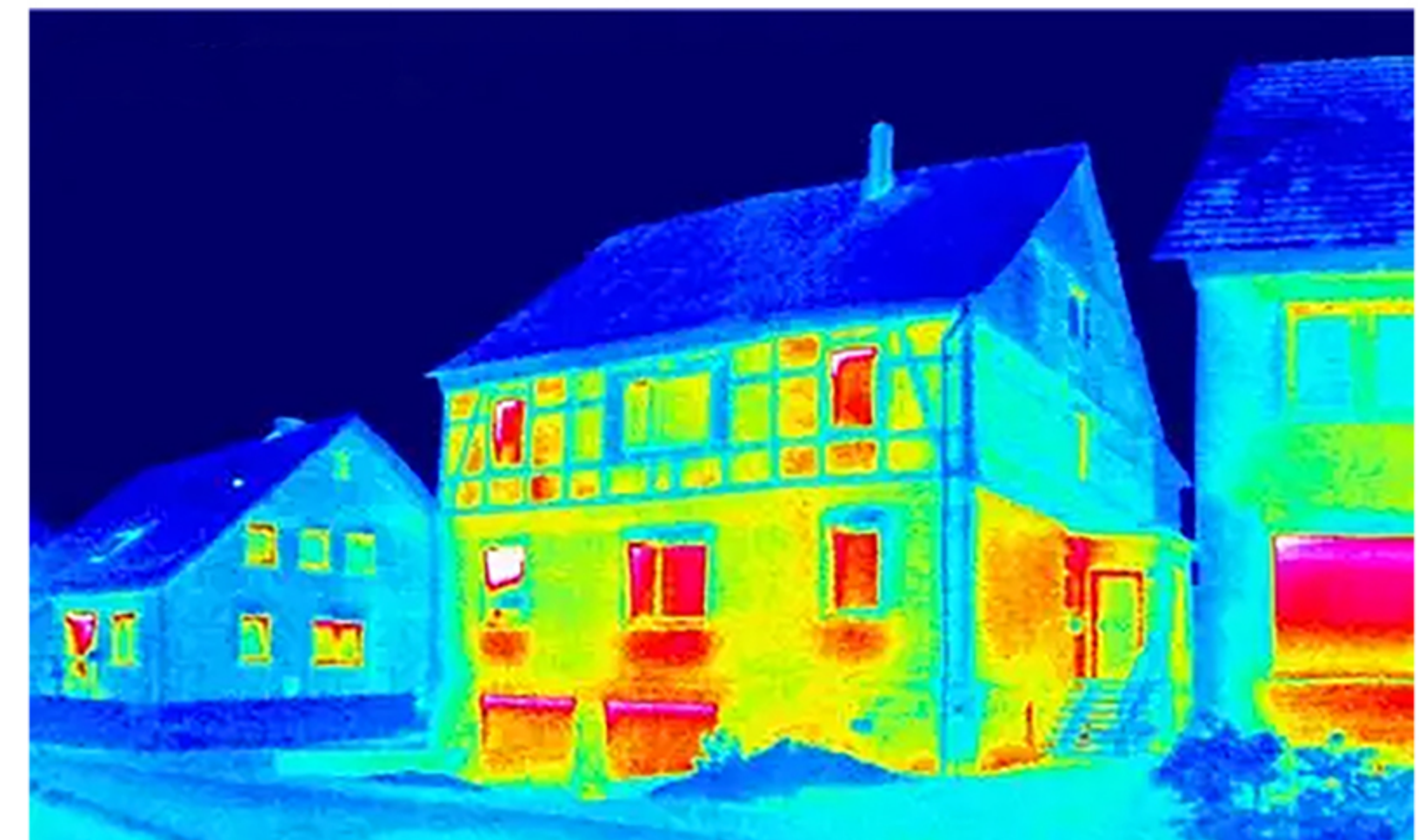
Detectors and Lenses	
Detector type	Cooled medium wave MCT
Detector resolution	640x512 Pixel
Detector pixel spacing	15 μ m
Wavelength range	3.7-4.8 μ m
NETD	\leq 22mk @25°C
Cooling method and time	Stirling refrigeration <6 minutes
numberF	F4
lens focal length	15-300mm
Image	
Electronic zoom	2X 4X
Brightness	Automatic / Manual
Auto/manual gain control	Support
Automatic replacement of bad pixels	Support
Manually replace bad pixels	Support
Non-uniformity correction	1point/2points
Adjustable frame rate	0.1-100Hz
Auto/manual focus	Support
Image polarity settings	White hot/Black hot
Image flip	Flip vertically/Flip horizontally
Input Voltage	24VDC
Power Input	DC 20-32V
Power	\leq 35W

Overview

VA-CM-6 is a cooling infrared thermal imaging component. The telephoto optics can conduct long-distance area searches. At the same time, the foldable optics greatly reduce the size of the component. It is widely suitable for the integration of various optoelectronic platforms. Greatly improve the troops' ability to conduct long-distance monitoring and reconnaissance at night

OVERVIEW

- (1)Advanced Image Processing: Advanced image processing embedded in hardware and software
- (2)Customization accepted:It can be customized to easily meet the different needs of users.
- (3)Customization accepted:It has strong scalability, and the structure, optical system, interface, etc. can be customized to easily meet the different needs of users.
- (4)High reliability:Robust structure, strong resistance to shock and vibration, and high reliability.



See The unseen In Night

See The unseen In Night